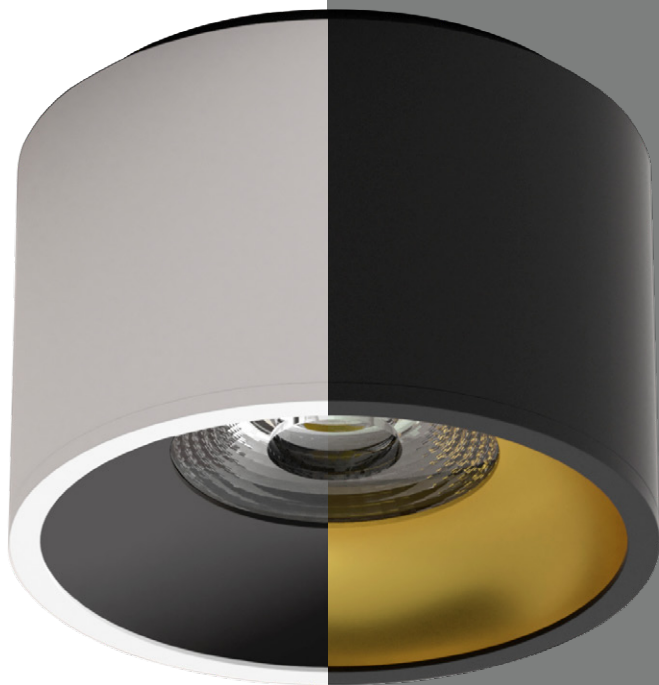
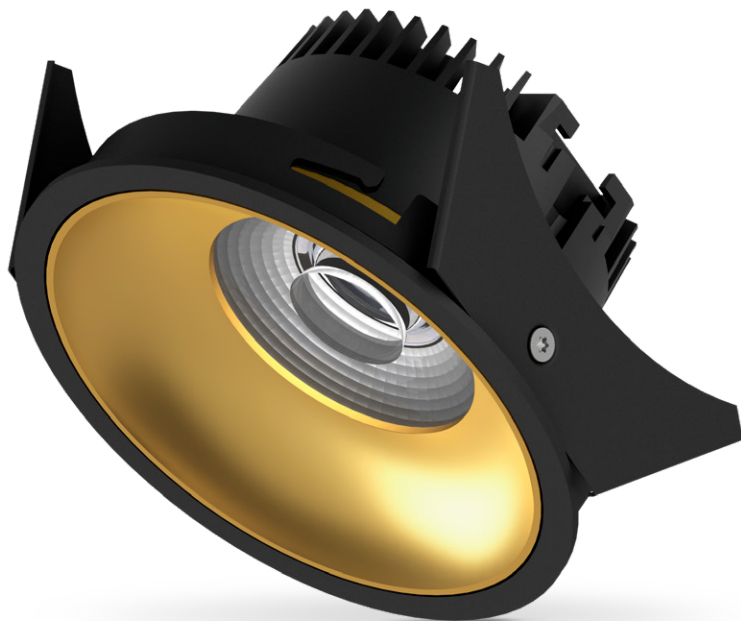


# Fido



Unique combinations in  
quality & design





## FIDO RANGE

**The Fido range is the new top range from Illuxtron which was developed by the renowned Belgian designer Serge Cornelissen.**

By using the HV-FD technology it was possible to provide the wall light (WL) and surface ceiling light (CL) with a minimalist design. The products are available in various interesting color combinations. Since the products are completely assembled in the Netherlands, specific color combinations can also be made on request through our MIYO department.



Fido 98



Fido 108



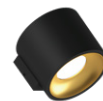
SensorFido 98



SensorFido CL 105



Fido CL 105



Fido WL 105

## EASY INSTALLATION PLUG & PLAY

- Max. 16 Amp
- No Inrush currents
- Max. 100 spots per string possible
- Dimmable to 0,1% with Casambi dimmer (CBU-TED, max 10 pcs per group)



BROADLY USABLE

## BROADLY USABLE

The entire series can be equipped with the unique Illuxtron HV-FD technology, which means that these spotlights can be directly connected to the electricity network without a power supply. Illuxtron introduced this technology in 2011 and has continuously improved it.

Because the electricity network has direct access to the light module, it is very important that the circuit is resistant to all kinds of pollution that occur in practice on the mains.

In early 2022, another major improvement was made to the circuit, so we can say that we have reached a point now where we can parry all contamination up to 2kV.

The advantage of this own technique is that a perfect dimming to less than 1% is possible when using the right dimmers from our dimmer list. Even in the lowest dimming positions the light is then very stable.





HOME AUTOMATION

For home automation, KNX is currently the standard where by means of Dali power supplies the spotlights can be dimmed. The recessed spotlights can also be supplied with a Dali power supply in order to be easily connected to such a KNX system.

What is a much more affordable solution now are the new wireless systems. If you opt for such a system, the HV-FD technology is the best choice because it can be controlled perfectly. With 1 wireless dimmer for a group of HV-FD fixtures you save maximum on expensive home automation components.



Housing/Reflector ring	Item code
White/Gold	XX=61
White/Black	XX=62
White/White	XX=65

Housing/Reflector ring	Item code
Black/Gold	XX=71
Black/Black	XX=72
Black/White	XX=76



 **ILLUXTRON®**  
LIGHTING

All products are developed by our own people and then assembled in various workshops by people with a disadvantage on the labor market. The range is aimed at the higher market segment and guarantees the use of high quality materials, resulting in a warranty of 7 years. 7 years warranty can be guaranteed.

**MADE IN  
HOLLAND**

**7 YEAR  
WARRANTY**



Check out our website for  
more information and inspiration.  
Scan the QR code or go to  
[illuxtron.com](http://illuxtron.com)!



**Illuxtron International BV**  
Mercuriusweg 19  
4382 NC Vlissingen  
The Netherlands

+31 (0)85 773 63 60  
[info@illuxtron.com](mailto:info@illuxtron.com)  
[www.illuxtron.com](http://www.illuxtron.com)

 **ILLUXTRON®**  
LIGHTING